

Facts About Swine Flu



Schools, health care facilities, businesses and private individuals everywhere are sounding an alarm in response to the reappearance of a potentially deadly strain of Swine Flu.

What is Swine Flu?

Swine Flu is a respiratory disease normally found in pigs and caused by type A Influenza viruses.

How is it spread?

Just as the common flu is passed along, Swine Flu is thought to be spread by coughing, sneezing or touching something that has the live virus on it. Some viruses can live 2 hours or longer outside the body.

What precautionary measures should I take?

The best current advice is to practice good hand hygiene. Periodic hand washing with an anti-microbial hand soap or the use of an alcohol based hand sanitizer when hand washing is not possible is a good preventive measure.

What else can I do?

Swine influenza is known to be caused by an Influenza A virus, a genus of the Orthomyxoviridae family of viruses known to be susceptible to quat based disinfectants. While members of virus families, or subtypes (for example H1N1) may express different infectious characteristics, the virus family members all share the same taxonomy, or physicochemical characteristics that lead to susceptibility to inactivation by quat based disinfectants. In the US, the market and EPA consider all strains of Influenza A virus to have the same susceptibility to inactivation by quat based disinfectants, or if a product can kill one strain, it can kill all. While a given EPA Registered disinfectant label may not list Swine Flu (infectious agent) specifically, if it lists Influenza A virus, it will effectively inactivate all Influenza A viruses regardless of the specific subtype.

ACS stocks many quat based disinfectants effective against Influenza A virus:

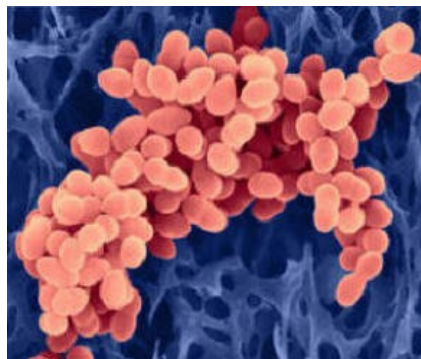
- **Ad Bac 4227**
Formula #8013
- **Clean & Shine**
Formula #5190
- **Lemon-E**
Formula #9313
- **Mint Disinfectant**
Formula #5160
- **Pine Disinfectant**
Formula #5120
- **Spray-Time RTU**
Formula #0326
- **Conqueror RTU**
Formula #5110

Use the one that best fits your application needs. These products are effective against many other bacterial strains—see product labels for details.



39-30 Review Avenue
Long Island City, NY 11101
1-888 WAX PLUS
718-392-8080 • Fax: (718)482-9366

Visit Us on the web!
www.cleaning-solutions.com



What can help prevent the spread of Swine Flu?

Effective use of the disinfectants listed above with kill claims against Influenza A virus and diligent hand hygiene using these quality anti-microbial soaps:

- **Derma-San Anti-Microbial Hand Soap**
Formula #9523
- **San-O-Pearl Anti-Microbial Hand Soap**
Formula #4950